



SINOKO New European Crane Series

Innovating Today,
Inspiring Tomorrow.

KNCRANES

The Hidden Costs of Traditional Material Handling



High Energy Consumption

Inefficient drives and outdated motors lead to escalating operational overhead and wasted energy.



Complex Maintenance

Frequent downtime, difficult component access, and oil leakage issues reduce overall productivity.



Low Operation Stability

Traditional systems lack precise control, increasing sway and risk to sensitive loads.



High Factory Construction Cost

Bulky, high-profile equipment requires taller, more expensive building infrastructure.

Redefining Efficiency Through Modular Intelligence

Modular Design

High Generalization

Full VFD Control

Precision movement

Ultra Safety

Uncompromised Protection



Operation Energy Saving (15–35% reduction)



Maintenance-Free



Long Service Life



Large Working Space



High Interchangeability



Founded in 2008, SINOKO is a strategic member of the China Heavy Machinery Industry Association and a national-level high-tech enterprise providing intelligent material handling solutions.

500+ **18**

National Patents

Exceptional Achievements

Values:

Unity, Pragmatism, Innovation, Dedication

Energy Saving Hoist-The Heart of the System: S Series

Aluminum Alloy Housing:

Die-cast, Lightweight, Corrosion-Resistant.

High-Efficiency Inverter Motor:

100Hz Design, 15%– 35% Energy Saving



Large Diameter Drum:

Extends Wire Rope Life, Reduces Wear.

Electromagnetic Disc Brake:

1 Million-Cycle Brake Pad Lifetime.

Compact overall structure with low headroom design.

Product Spotlight: CXTD Single-Girder Crane



Maximum Effective Vertical Space

- **Three-in-One Drive:** Hardened Gear Reducer, Compact Structure, Low Noise
- **Low Headroom:** Effectively Reduces Factory Construction Costs
- **Smart Control:** Full Inverter Control for Smooth, Shock-Free Operation
- **Load Management:** Slow Speed for Heavy Loads, Fast Speed for Light Loads

Product Spotlight: CXTS Double-Girder Overhead Crane



STRUCTURAL INTEGRITY

Main girder adopts side-rail box structure connected with high-strength bolts.

THREE-LEG ALIGNMENT

Trolley end beams, pulley link beams, and hoisting drive beams are rigidly connected for superior alignment.

DRIVE SYSTEM

Inverter motor with hard gear reducer (HRC58-62). Protection class IP55, F-class insulation.

Flagship Performance: CXSM Winch Type Double-Girder Crane



Performance Metrics

- Effective Working Space: increased by 30%
- Energy Consumption: down by 15%–35%
- Wheel Pressure: down by 15%–56%
- Annual Failure Rate: down by 65%



Engineered with double safety guarantees (dual rope winding) and electronic anti-sway technology.

Engineered for Reliability: Components & Accessories



SF Series Three-in-One Drive

Integrated reducer, motor, and brake. No oil leakage.



High-Strength Wheel

Precision-machined for longevity.



Wire Rope Drum

Large diameter to reduce rope wear.



End Beam

Modular connection design.



Hook Block

High-grade steel alloy.

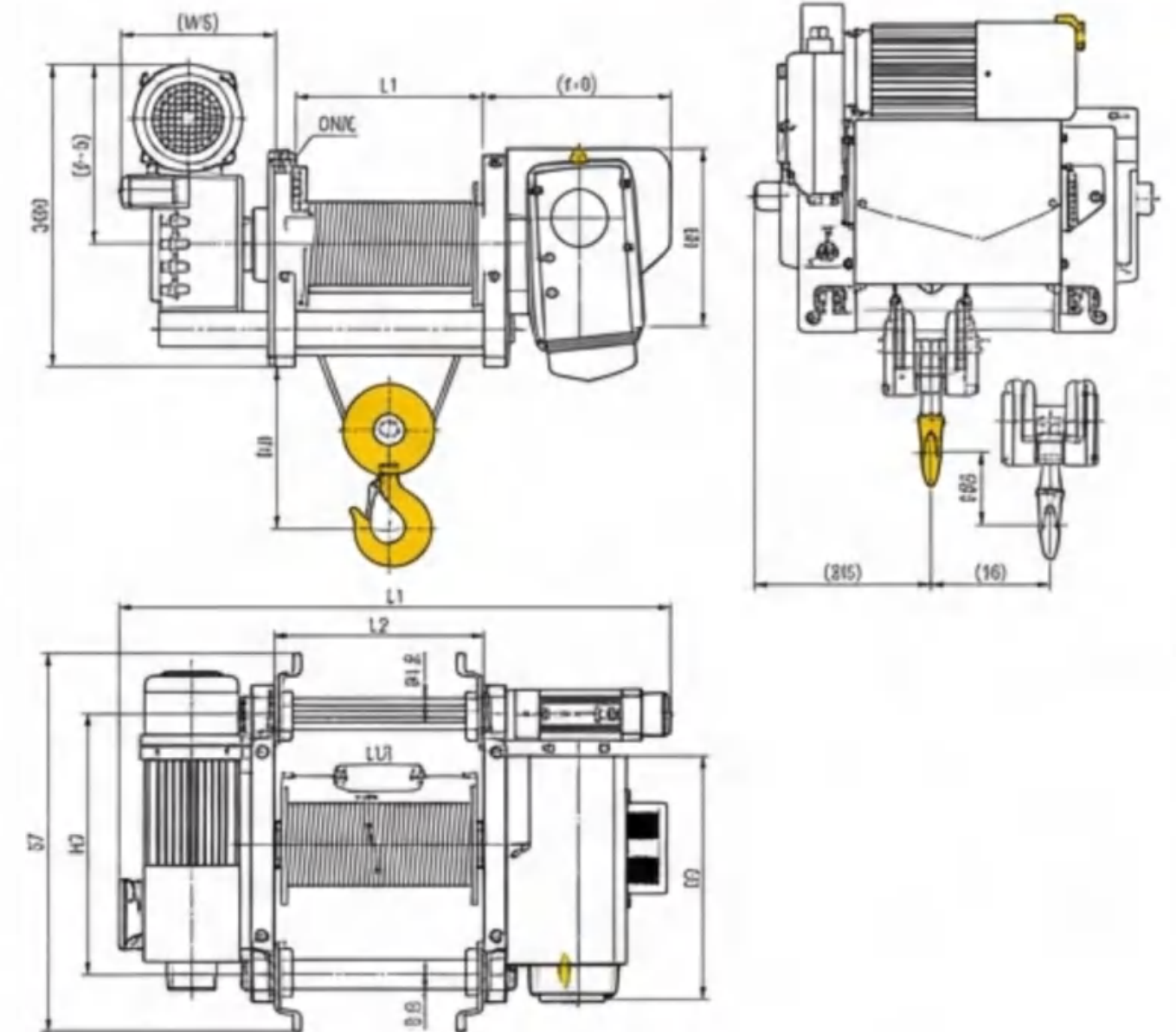


Wireless Remote

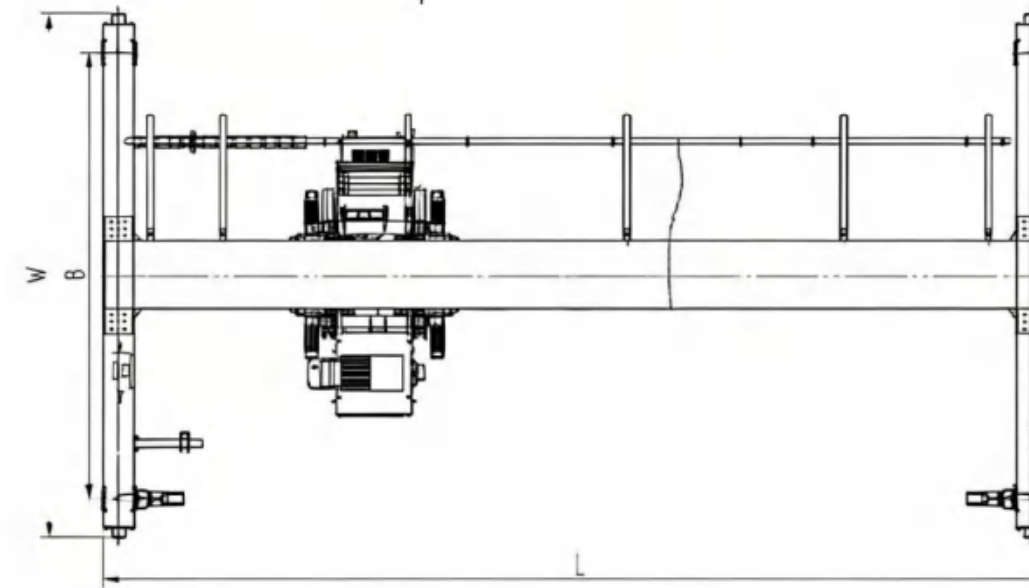
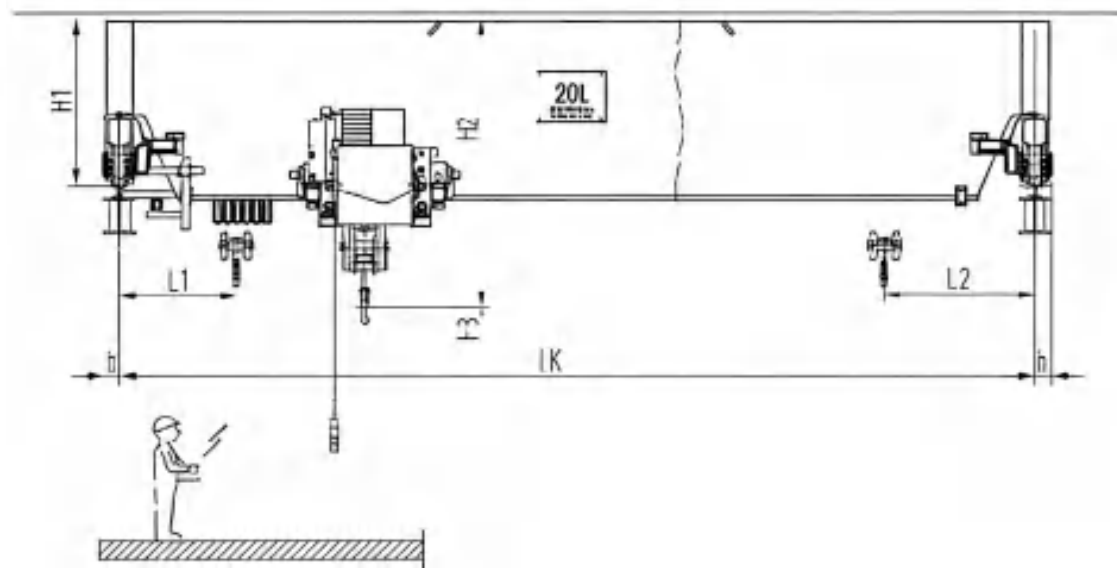
Ergonomic control.

Technical Data: S Series Hoist specifications (3t—16t)

Capacity (t)	Duty Class	Lifting speed (m/min)	Lifting power (kw)	Traveling speed (m/min)
3t	2m/M5	0.8/5.0	0.5/3.7	0—20
5t	2m/M5	0.8/5.0	0.75/5.0	0—20
10t	2m/M5	0.8/5.0	1.4/9.0	0—20
16t	2m/M5	0.7/4.0	2.1/15.0	0—20



Crane Specifications: CXTD



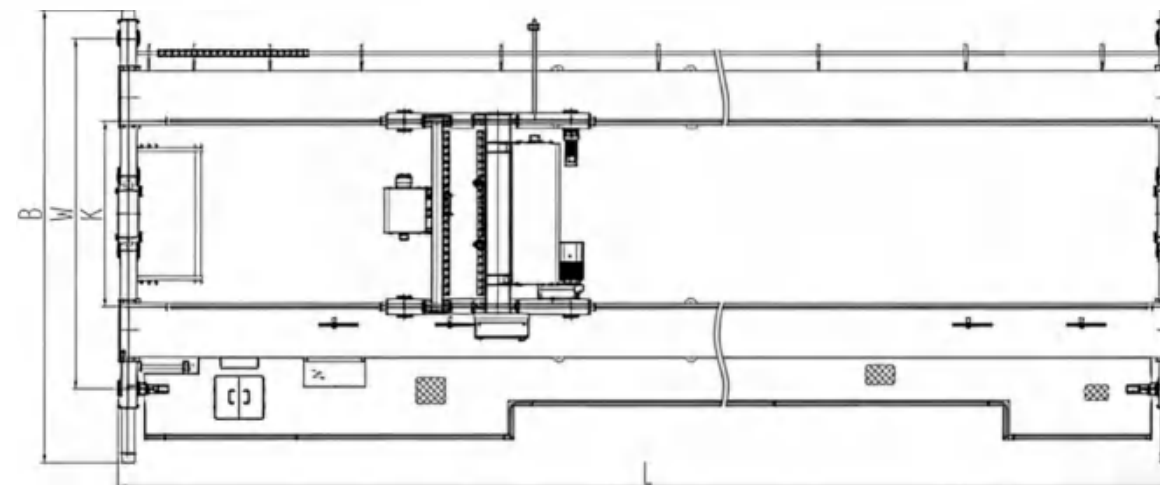
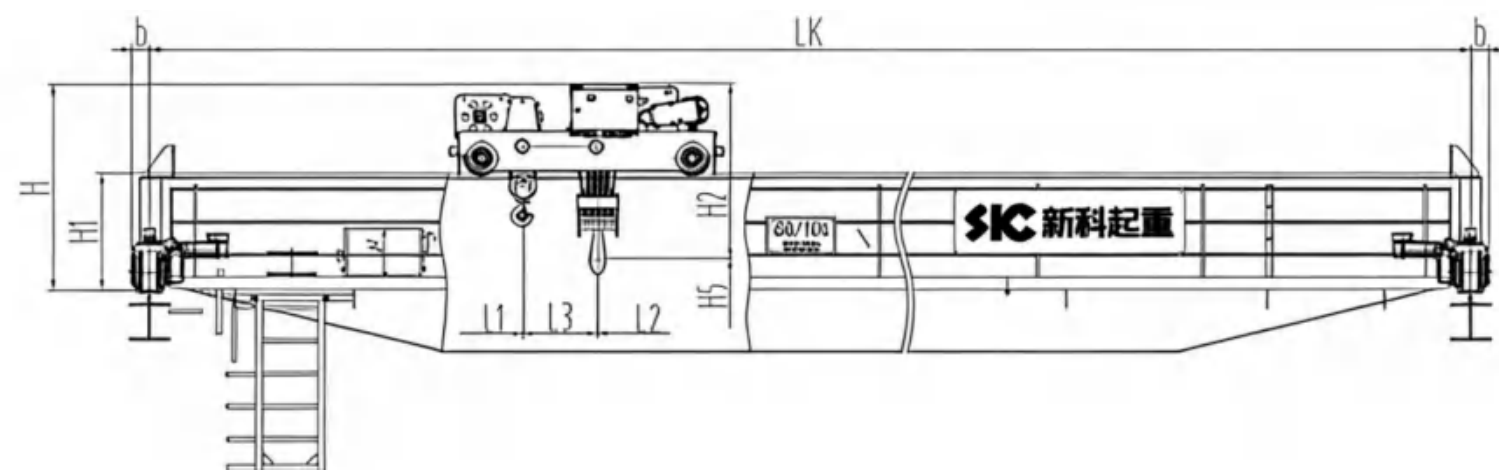
Key Parameters

Span(S)	7.5m– 28.5m
Max Wheel Pressure	13.2KN– 130.5KN
Total Crane Power	4.95kW– 24.1kW
Control Method	Ground / Remote / Cabin

Crane Specifications: CXTD Series

起重量 Lifting capacity	跨度 Span(LK)	起升高度 Lifting height (H3)	起升速度 Lifting speed (标配)	H1	H2	L	L1	L2	w	B	b0	最大轮压 Max.wheel pressure	大车轨道 Track	整机功率 Total power	整机自重 Crane weight
kg	m	m	m/min	mm	mm	mm	mm	mm	mm	mm	mm	KN	(荐)	kW	t
5000	7.5	9	5/0.5	664	1106	7746	1250	1220	2126	1680	123	26.1	P22	6.95	1.7
	10.5			714	1156	10746	1250	1220	2126	1680	123	28.3		6.95	2.1
	13.5			684	1131	13704	990	1245	2526	2080	102	30.3		6.95	2.7
	16.5			736	1308	16746	990	1245	2526	2080	123	32.9		6.95	3.5
	19.5			838	1269	19800	1080	1245	3126	2680	150	35.3		6.95	4.5
	22.5			938	1336	22800	1200	1245	3126	2680	150	38.1		6.95	5.5
	25.5			1038	1439	25800	1440	1245	3846	3400	150	41.3		6.95	6.7
	28.5			1038	1431	28800	1560	1245	3846	3400	150	45.2		6.95	8.3
10000	7.5	9	5/0.5	788	1263	7800	1100	1220	2334	1680	150	48.8	P38	11.6	2.3
	10.5			668	1363	10800	1100	1220	2334	1680	150	52.2		11.6	2.8
	13.5			748	1463	13800	1100	1220	2526	2080	150	55.8		11.6	3.7
	16.5			790	1565	16800	1200	1220	2526	2080	150	58.4		12.5	4.6
	19.5			950	1665	19800	1200	1220	3126	2680	150	62.1		12.5	5.9
	22.5			1010	1715	22800	1300	1235	3476	2990	150	66.2		12.5	7.5
	25.5			1110	1815	25800	1350	1235	4126	3640	150	70.8		12.5	9.1
	28.5			1110	1865	28800	1450	1235	4126	3640	150	77.1		12.5	10.6
20000	7.5	9	5/0.5	765	1610	7800	1400	1350	2486	1600	150	90.3	P38	24.1	3.2
	10.5			821	1712	10800	1400	1350	2486	1600	150	97.5		24.1	4
	13.5			921	1812	13800	1400	1350	2566	2000	150	103.8		24.1	5.4
	16.5			1021	1912	16800	1400	1350	3146	2600	150	109.5		24.1	6.9
	19.5			1071	2012	19800	1400	1350	3146	2600	150	113.4		24.1	8
	22.5			1226	2112	22800	1400	1350	3626	3000	150	118.4		24.1	9.6
	25.5			1330	2212	25800	1450	1400	4266	3640	150	125.5		24.1	12
	28.5			1332	2312	28800	1560	1400	4266	3640	150	130.5		24.1	14

Crane Specifications: CXTS



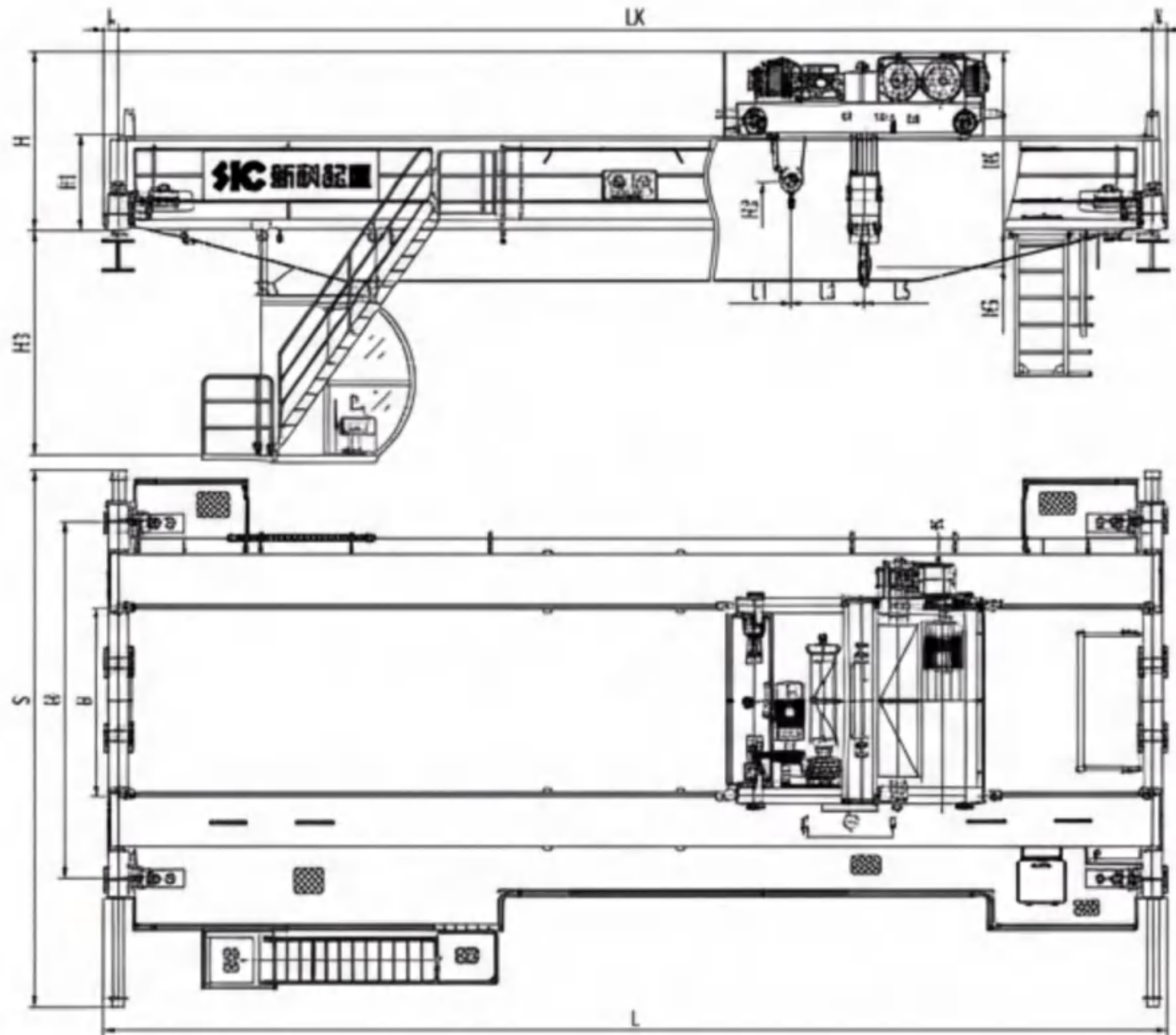
Key Parameters

Span (S)	10.5mm-31.5mm
Max Wheel Pressure	36.4KN-191.9KN
Total Crane Power	6.9kW-36.5kW
Control Method	Ground/Remote/Cabin

Crane Specifications: CXTS Series

起重量Liftingcapacity	跨度Span(LK)	起升高度Lighectt(H5)	起升速度Liftingspeed (标配)	H	H	H2	L	L1	L2	L3	B	w	k	b	最大轮压Max.wheel pressure	大车轨道Track	整机功率Total power	整机自重Crane weight	
t	m	m m/m	in mm	mm	mm	mm m	mm	mm	mm	mm	mm	mm	mm	mm	KN	(荐)	W	t	
5	10.5	9	0.5-5	1095	538	1007	10800	1200	800	/	4080	3140	1400	150	36.4	P38	6.9	5	
	13.5			1095	538	1007	13800	1200	800			4080	3140	1400	150		38.8	6.9	5.8
	16.5			1095	538	1007	16800	1200	800			4080	3140	1400	150		41.8	7.8	6.9
	19.5			1205	648	1007	19800	1200	800			4380	3640	1400	150		45.7	7.8	8.5
	22.5			1205	648	1007	22800	1200	800			4380	3640	1400	150		49.1	7.8	9.8
	25.5			1205	648	1007	25300	1200	800	/		4580	3640	1400	150		53.6	7.8	11.6
	28.5			1310	753	1007	28800	1200	800	/		4880	4140	1400	150		59.3	7.8	13.9
	31.5			1350	793	1007	31800	1200	800	/		4880	4140	1400	150		66.1	78	16.6
10	10.5	9	0.5-5	1152	588	1364	10800	1200	800	/	4080	3140	1400	150	60.2	P38	12.5	5.4	
	13.5			1152	588	1364	1380	0120	800	/	4080	3140	1400	150	63.5		12.5	6.4	
	16.5			1212	648	1364	16800	1200	800	/	4380	3640	1400	150	67.6		12.5	7.9	
	19.5			1317	753	1364	19800	1200	800	/	4580	3640	1400	150	73.2		12.5	10	
	22.5			1317	753	1364	22800	1200	800	/	4580	3640	1400	150	78.7		12.5	12.2	
	25.5			1317	753	1364	25800	1200	800	/	780	4040	1400	150	82.9		12.5	13.9	
	28.5			1317	753	1364	28800	1200	800	/	780	4040	1400	150	88.6		12.5	16.2	
	31.5			1462	898	1364	31800	1200	800	/	4880	4040	1400	150	93.2		12.5	18	
20/5	10.5	9	主0.4-4 副0.5-5	1429	750	1600	10760	1160	1260	650	4672	3540	2000	130	106.4	P38	27	6.8	
	13.5			1434	755	1600	13760	1160	1260	650	4672	3540	2000	130	111.8		27	8	
	16.5			1427	748	1600	16760	1160	1260	650	4946	3960	2000	130	70.7		27.8	10	
	19.5			1427	748	1600	19760	1160	1260	650	4992	3960	2000	130	74.5		278	12.5	
	22.5			1487	808	1600	22760	1160	1260	650	4992	3960	2000	130	76.5		27.8	13.7	
	25.5			1609	930	1600	25760	1160	1260	650	4992	3960	2000	130	80.1		27.8	16.3	
	28.5			1614	935	1600	28760	1160	1260	650	5092	3960	2000	130	84.5		29.2	19.6	
	31.5			1674	995	1600	31760	1160	1260	650	5092	3960	2000	130	87.3		29.2	21.7	
50/10	10.5	9	主0.2-2 副0.5-5	1652	716	1867	10840	1050	1350	776	5836	4700	2500	170	152.8	P43	36.5	12.6	
	13.5			1715	778	1867	13840	1050	1350	776	5836	4700	2500	170	159.2		36.5	14.9	
	16.5			1814	878	1867	16840	1050	1350	776	5836	4700	2500	170	164.6		36.5	17.5	
	19.5			1812	876	1867	19840	1050	1350	776	5836	4700	2500	170	169.5		36.5	20.2	
	22.5			1967	1031	1867	2284	0105	0 135	0 776	5836	4700	2500	170	175.7		36.5	24.4	
	25.5			1971	1035	1867	25840	1050	1350	776	5836	4700	2500	170	170.1		36.5	27.2	
	28.5			2069	1133	1867	28840	1050	1350	776	6086	4700	2500	170	185.8		36.5	31.3	
	31.5			2189	1253	1867	31840	1050	1350	776	6086	4700	2500	170	191.9		36.5	35.8	

Crane Specifications: CXSM Series



Capacity Range

10t up to 320/80t

Lifting Height

12m– 18m Standard

Lifting Speed

0.6– 6m/min (Variable Frequency)

Work Duty

A5– A8

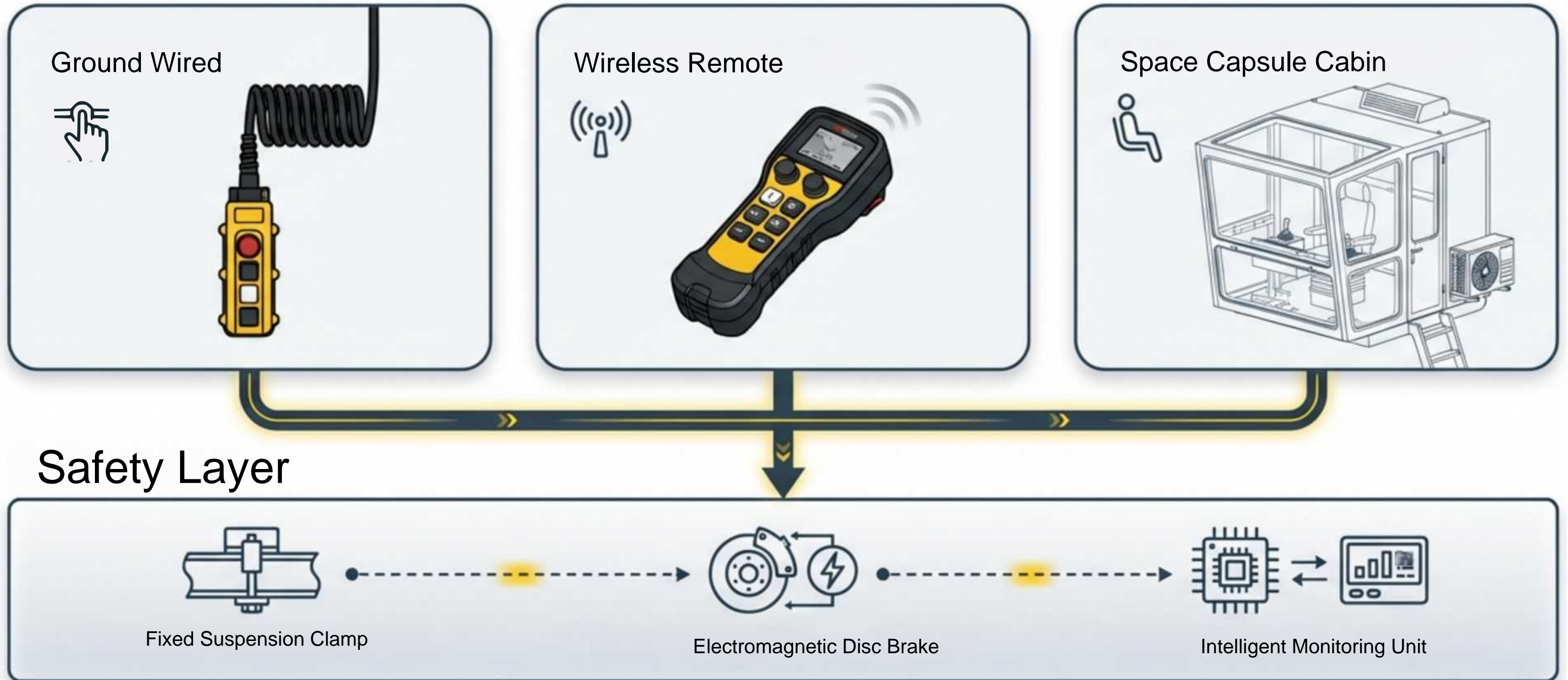
Span

10.5m– 34.5m

Crane Specifications: CXSM Series

起重量 Lifting capacity	跨度 Span(LK)	起升高度 Lifting height (H5)	起升速度 Lifting speed (标配)	H	H1	H2	H3	L	L1	L2	B	W	K	b	最大轮压 Max.wheel pressure	大车轨道 Track	整机功率Total ower	整机自重 Crewegt
t	m	m	m/min	mm	mm	mm	mm	mm	mm	mm	mm	mm	mm	mm	KN	(荐)	kW	t
5	10.5	18	0.9-9	1398	588	1575	2335	10800	1200	1200	4922	3140	1400	150	42.4	P38	14	7.1
	13.5			1398	588	1575	2335	13800	1200	1200	4922	3140	1400	150	45.6	P38	14	8
	16.5			1398	588	1575	2446	16800	1200	1200	4817	3140	1400	150	49.3	P38	14	8.9
	19.5			1558	748	1575	2446	19800	1200	1200	5123	3640	1400	150	55	P38	14	10.8
	22.5			1558	748	1575	2446	22800	1200	1200	5123	3640	1400	150	60.3	P38	14	12.9
	25.5			1563	753	1575	2593	25810	1200	1200	5122	3640	1400	155	66.5	P38	15.6	15.2
	28.5			1563	753	1575	2713	28810	1200	1200	5612	4140	1400	155	72.2	P38	15.6	17.7
	31.5			1603	793	1575	2823	31810	1200	1200	5626	4140	1400	155	80	P38	15.6	19.9
10	10.5	14	0.8-8	1409	588	1737	2335	10800	1200	1200	4922	3140	1400	150	67.8	P38	22.9	7.9
	13.5			1409	588	1737	2446	13800	1200	1200	4922	3140	1400	150	72.3	P38	22.9	9
	16.5			1574	753	1737	2441	16810	1200	1200	5123	3640	1400	155	78.6	P38	24.5	10.7
	19.5			1574	753	1737	2593	9810	200	1200	5122	3640	1400	155	85.6	P38	24.5	13.1
	22.5			1574	753	1737	2693	22810	1200	1200	5112	3640	1400	155	90.3	P38	24.5	14.7
	25.5			1579	758	1737	2688	25830	1200	1200	5582	4040	1400	165	96.9	P38	24.5	16.9
	28.5			1619	798	1737	2798	28830	1200	1200	5582	4040	1400	165	104.3	P38	24.5	19.1
	31.5			1719	898	1737	2798	31830	1200	1200	5582	4040	1400	165	110.4	P38	24.5	21.1
20	10.5	13	0.6-6	1684	768	2176	2225	10830	1150	1510	5326	3540	2000	165	118.6	P43	33.2	10
	13.5			1684	768	2176	2436	3830	150	1510	5326	3540	2000	165	125.8	P43	33.2	11.2
	16.5			1679	763	2176	2593	16810	1150	1510	5954	3960	2000	155	76.1	P43	36	14.1
	19.5			1681	765	2176	2693	19810	1150	1510	5954	3960	2000	155	81	P43	36	15.9
	22.5			1741	825	2176	2783	22810	1150	1510	5954	3960	2000	155	85.2	P43	36	17.9
	25.5			1861	945	2176	2763	25810	1150	1510	6054	3960	2000	155	89	P43	36	20.5
	28.5			1821	945	2176	2763	28810	1150	1510	6054	3960	2000	155	94.4	P43	39.2	23.4
	31.5			1921	1005	2176	2853	31810	1150	1510	6054	3960	2000	155	97.8	P43	39.2	25.7
50	10.5	12	0.4-4	1874	779	2850	2589	08741	3801	8806	8974	700	2500	187	154.3	P43	64	17.5
	13.5			1938	843	2850	2629	13874	1380	1880	6897	4700	2500	187	162.9	P43	64	19.7
	16.5			2038	943	2850	2683	16874	1380	1880	6897	4700	2500	187	170.5	P43	64	23
	19.5			2038	943	2850	2831	19874	1380	1880	6897	4700	2500	187	176.6	P43	64	26.2
	22.5			2138	1043	2850	2831	22874	1380	1880	6897	4700	2500	187	182.8	P43	64	29.2
	25.5			2140	1043	2850	2883	25874	1380	1880	6898	4700	2500	187	189.7	P43	70	32.8
	28.5			2240	1145	285	0293	32887	4138	0188	07097	4700	2500	187	197.7	P43	70	37.8
	31.5			2360	1265	2850	2963	31874	1380	1880	7098	4700	2500	187	204.7	P43	70	42.3

Operation Modes & Safety Systems



Powering Key Industries

A solution designed for the world's most demanding environments.



Ready to Elevate Your Operations?

**INNOVATING
TODAY,
INSPIRING
TOMORROW**

Website: www.kinocranes.com

Email: sales@kinocranes.com

Phone: +86-19037303916

KINCRANES

